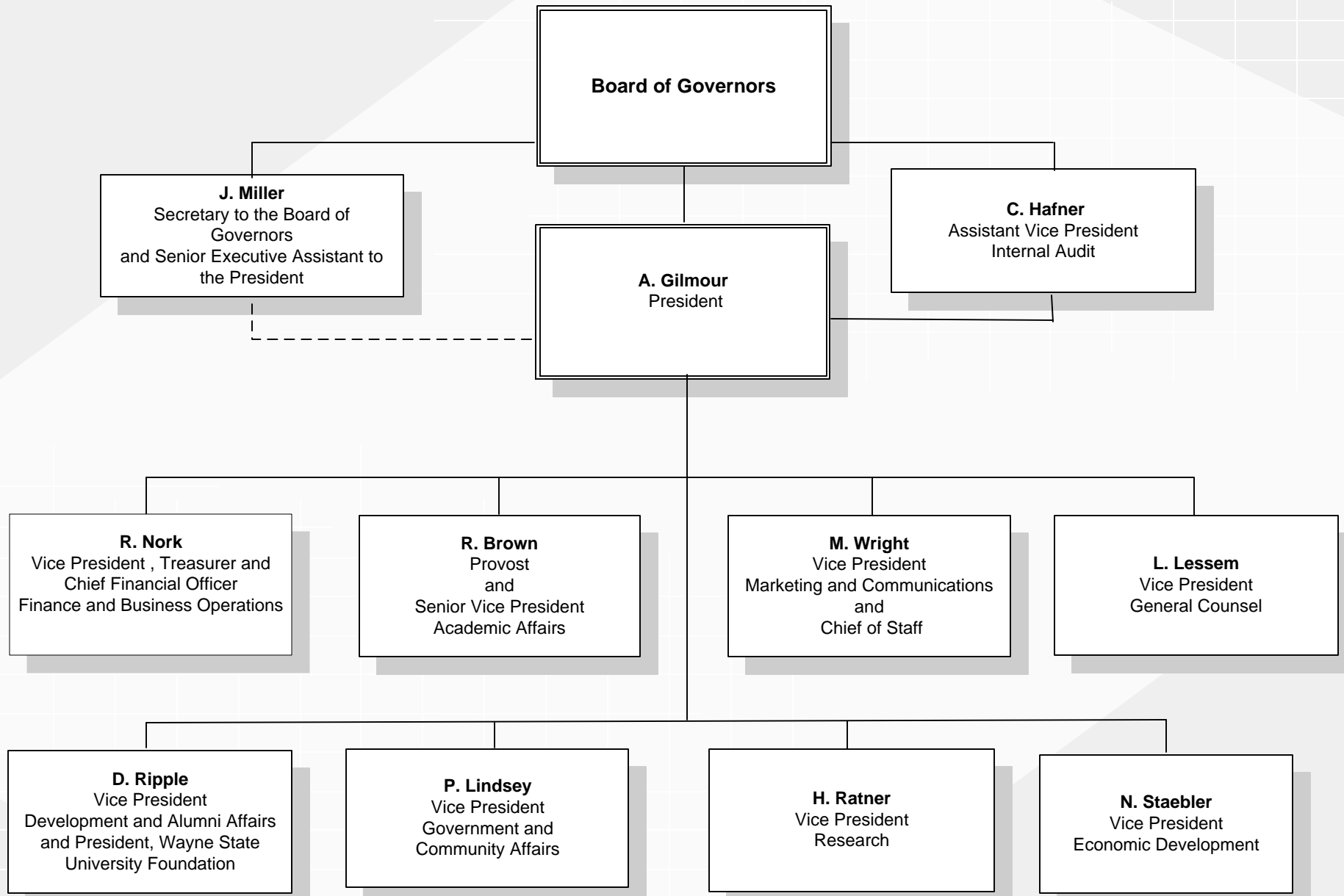


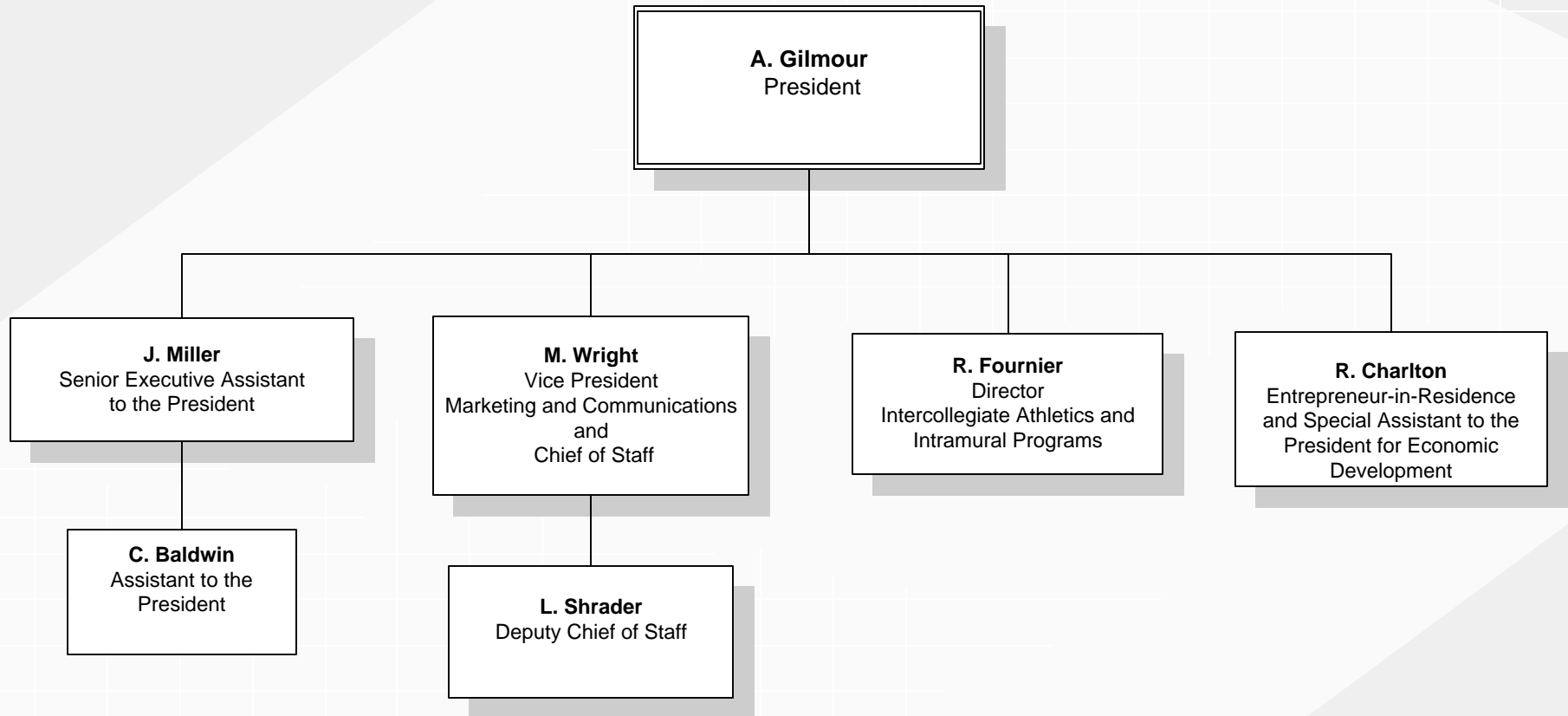
EXECUTIVE ADMINISTRATION

February 2012



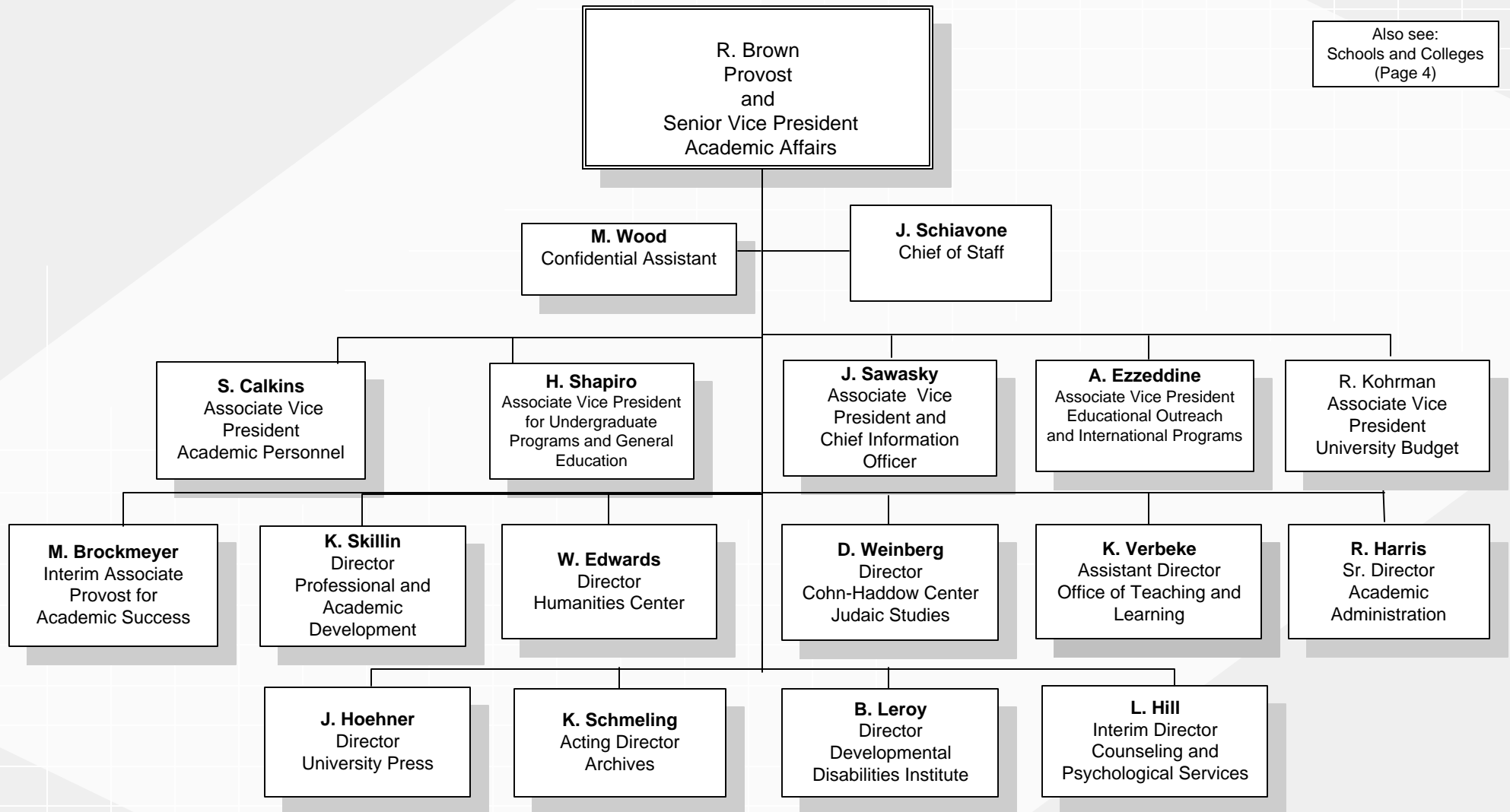
EXECUTIVE OFFICE OF THE PRESIDENT

February 2012



OFFICE OF THE PROVOST and SENIOR VICE PRESIDENT for ACADEMIC AFFAIRS

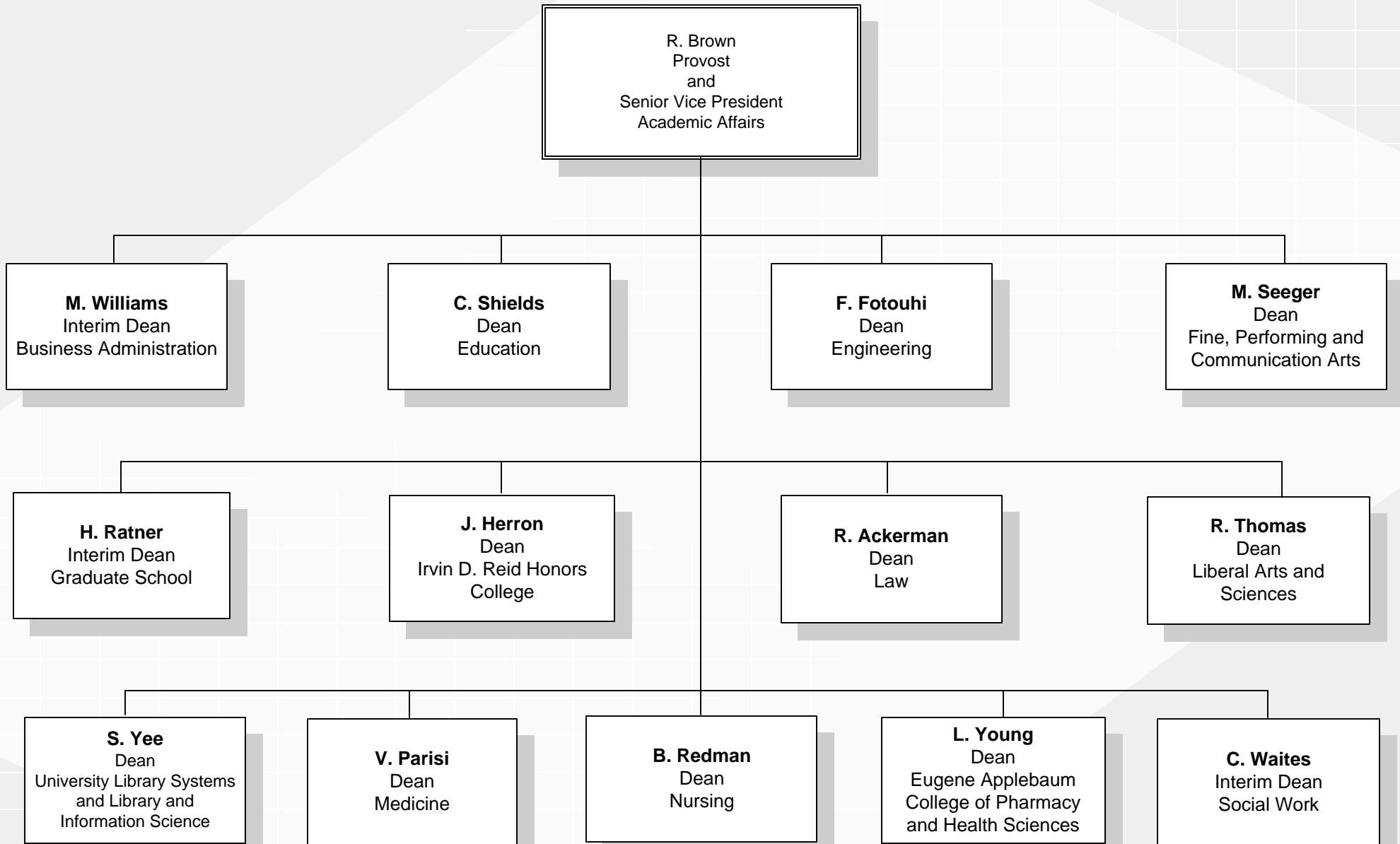
February 2012



Also see:
Schools and Colleges
(Page 4)

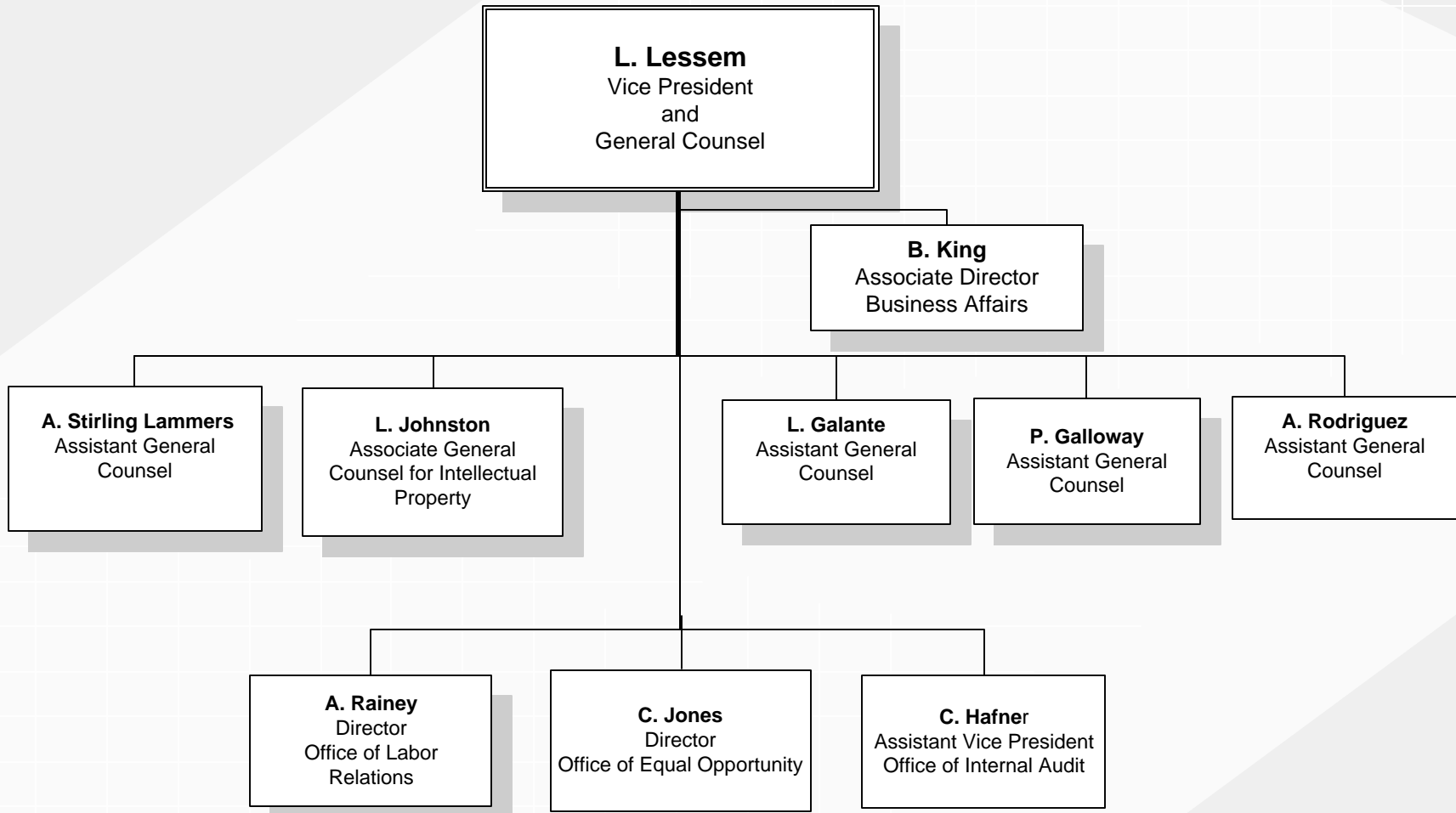
SCHOOLS AND COLLEGES

February 2012



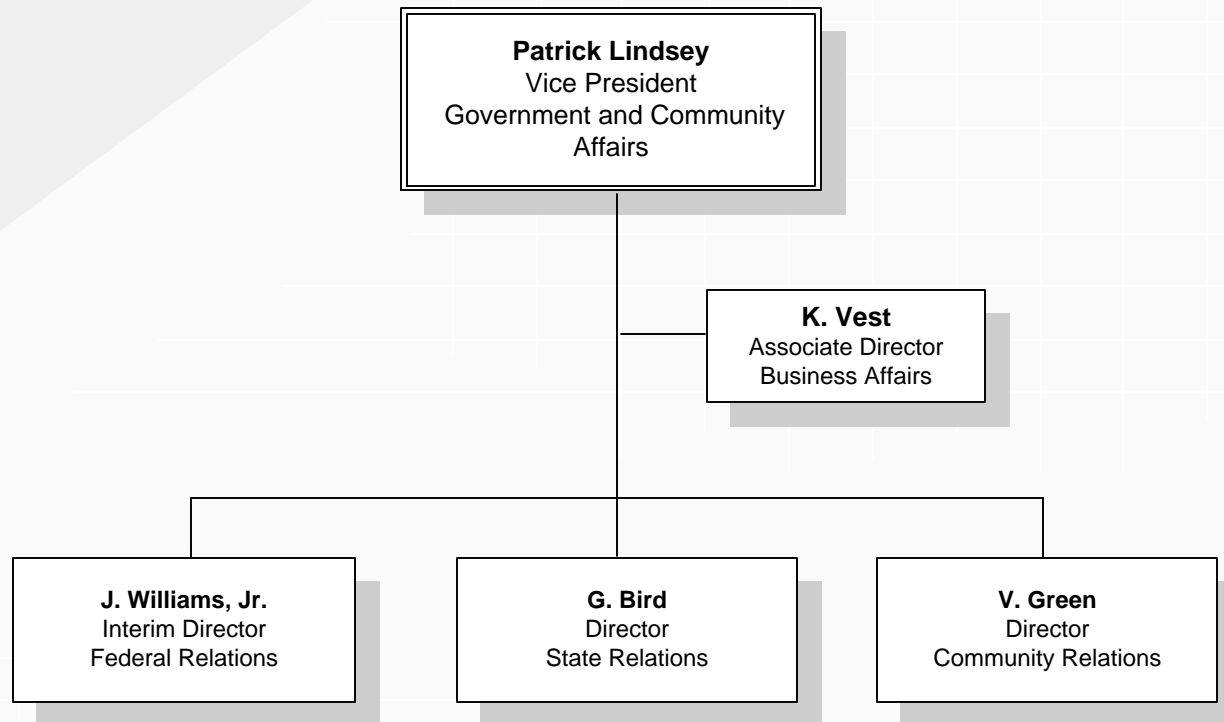
OFFICE OF THE GENERAL COUNSEL

February 2012



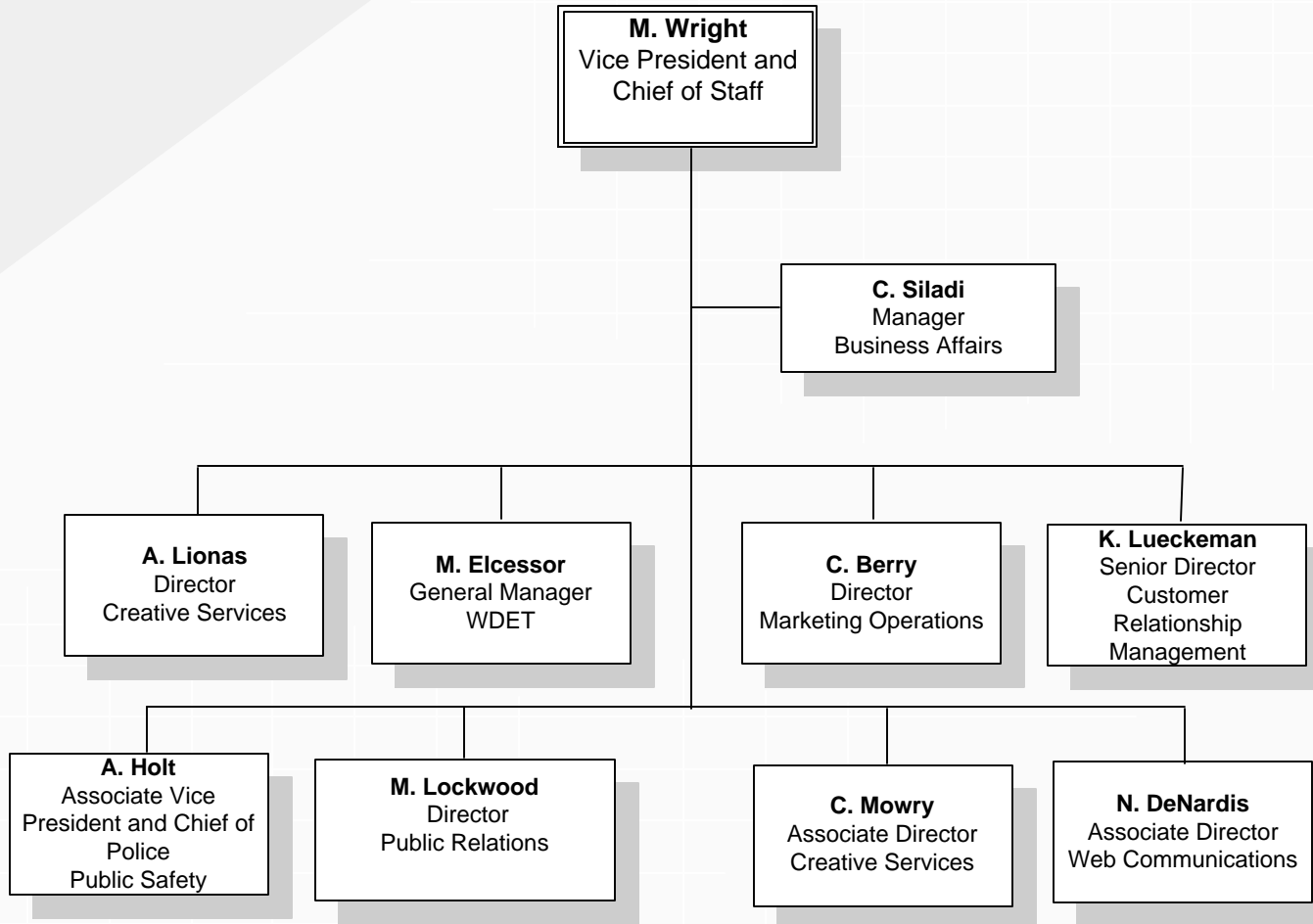
OFFICE OF GOVERNMENT AND COMMUNITY AFFAIRS

February 2012



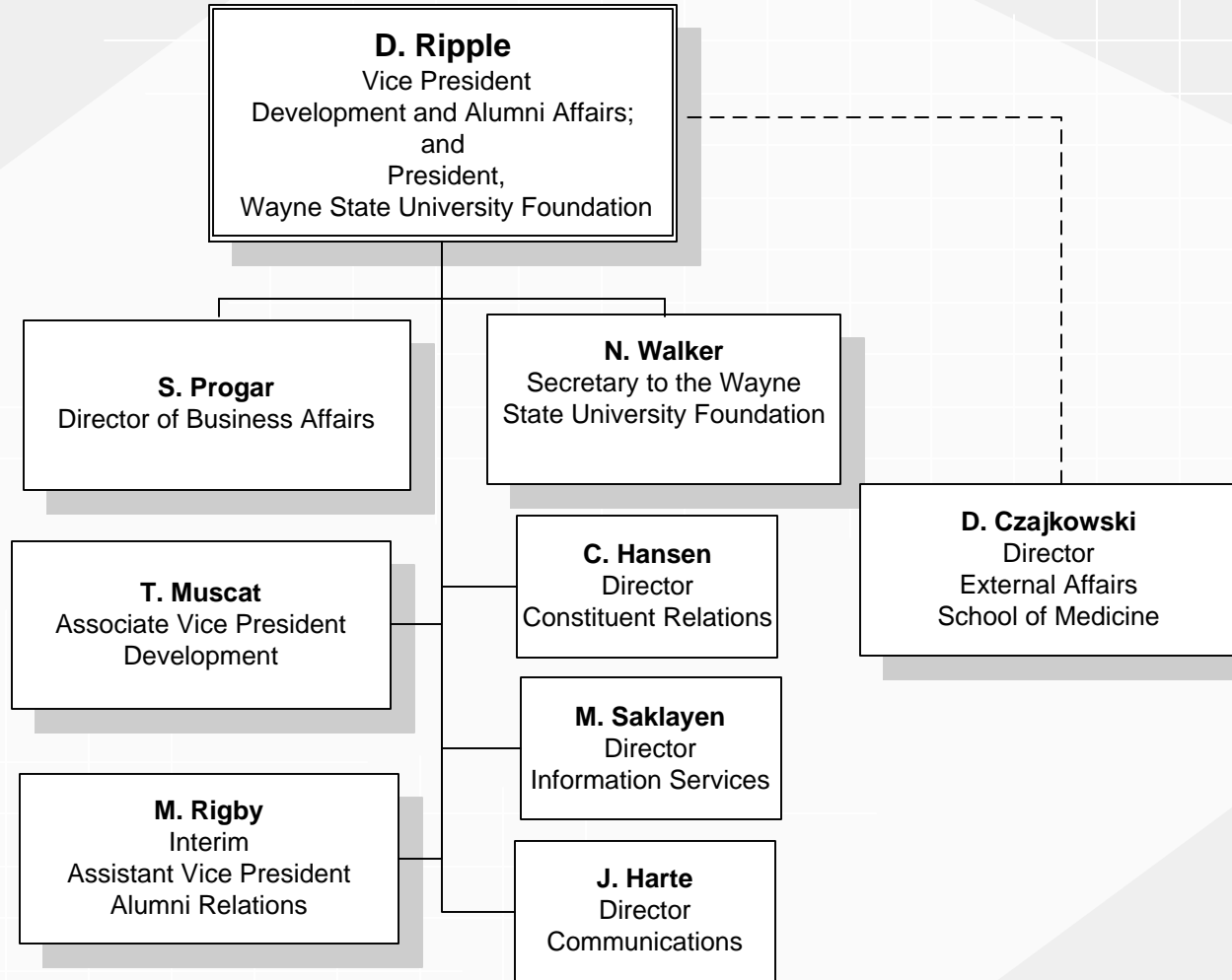
MARKETING AND COMMUNICATIONS AND CHIEF OF STAFF

February 2012



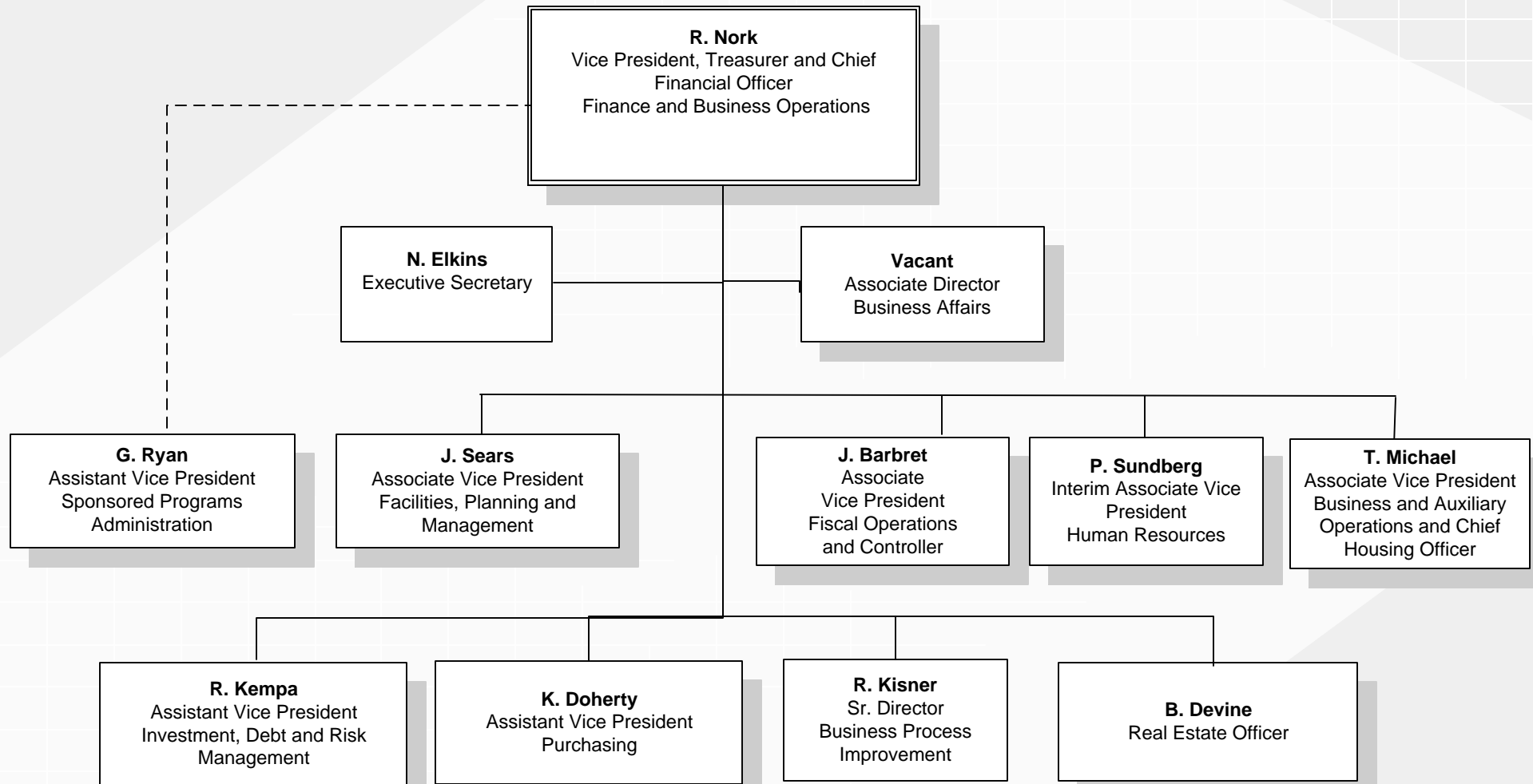
DEVELOPMENT AND ALUMNI AFFAIRS

February 2012



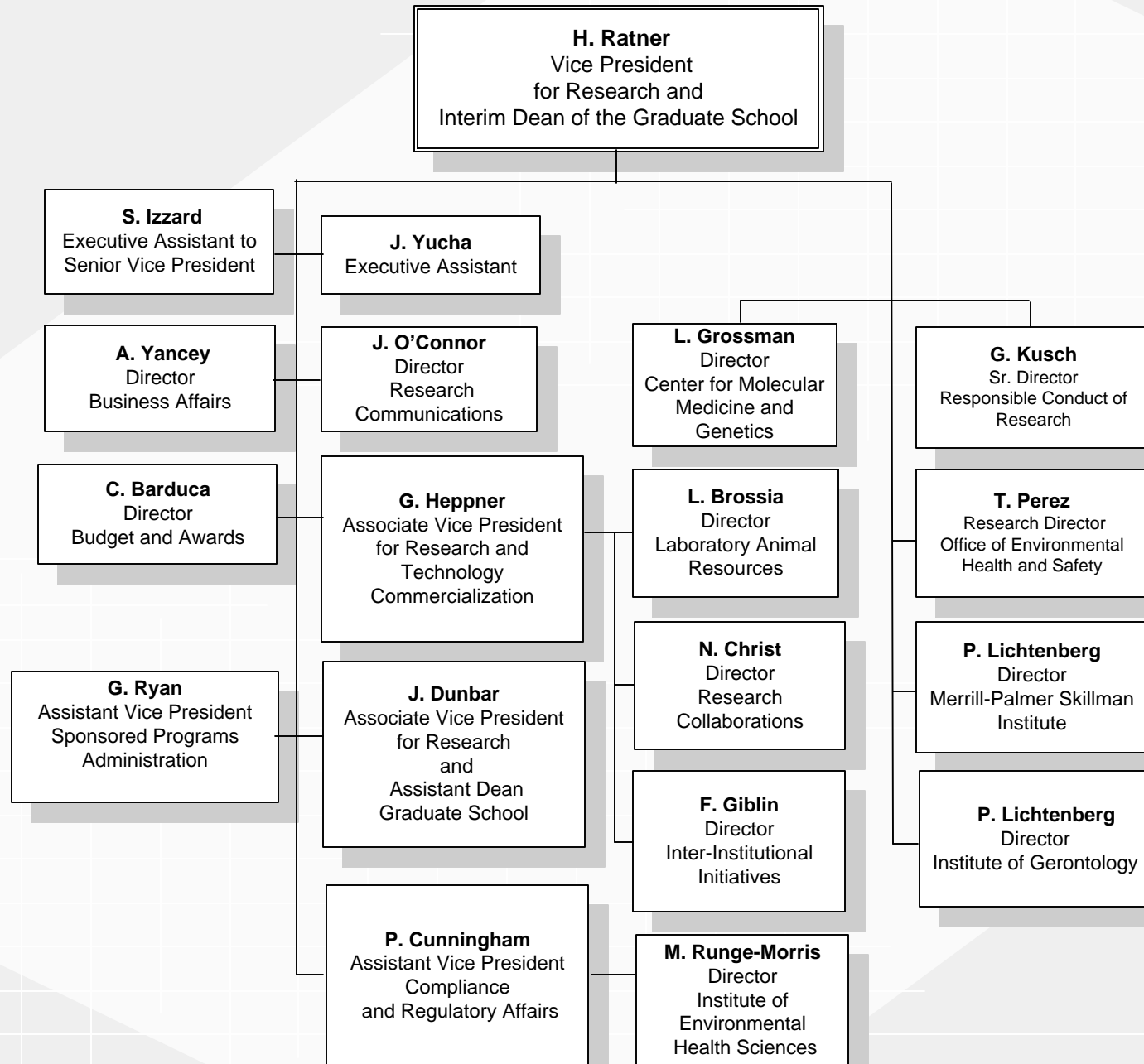
FINANCE AND BUSINESS OPERATIONS

February 2012



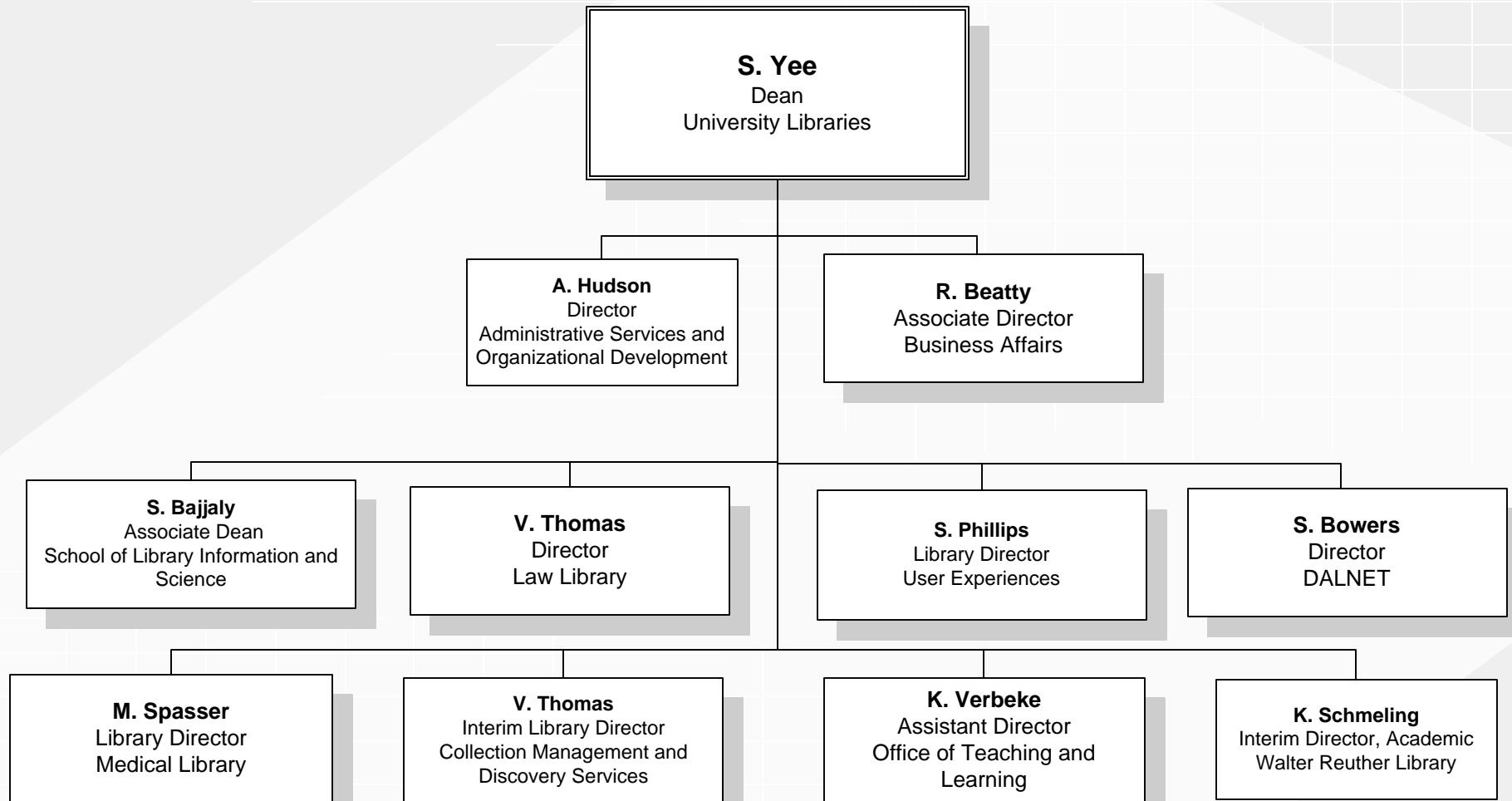
DIVISION OF RESEARCH

February 2012



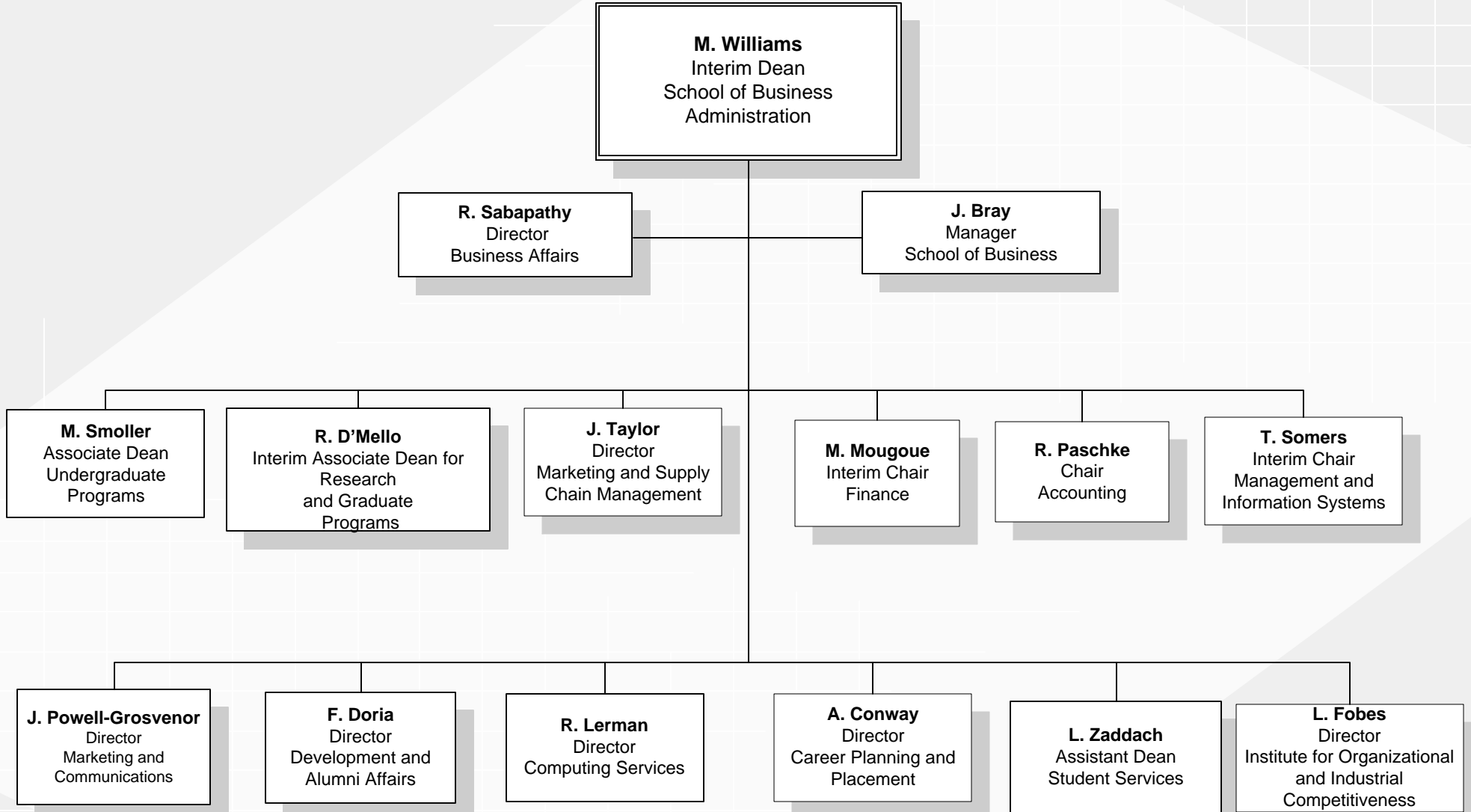
UNIVERSITY LIBRARIES

February 2012



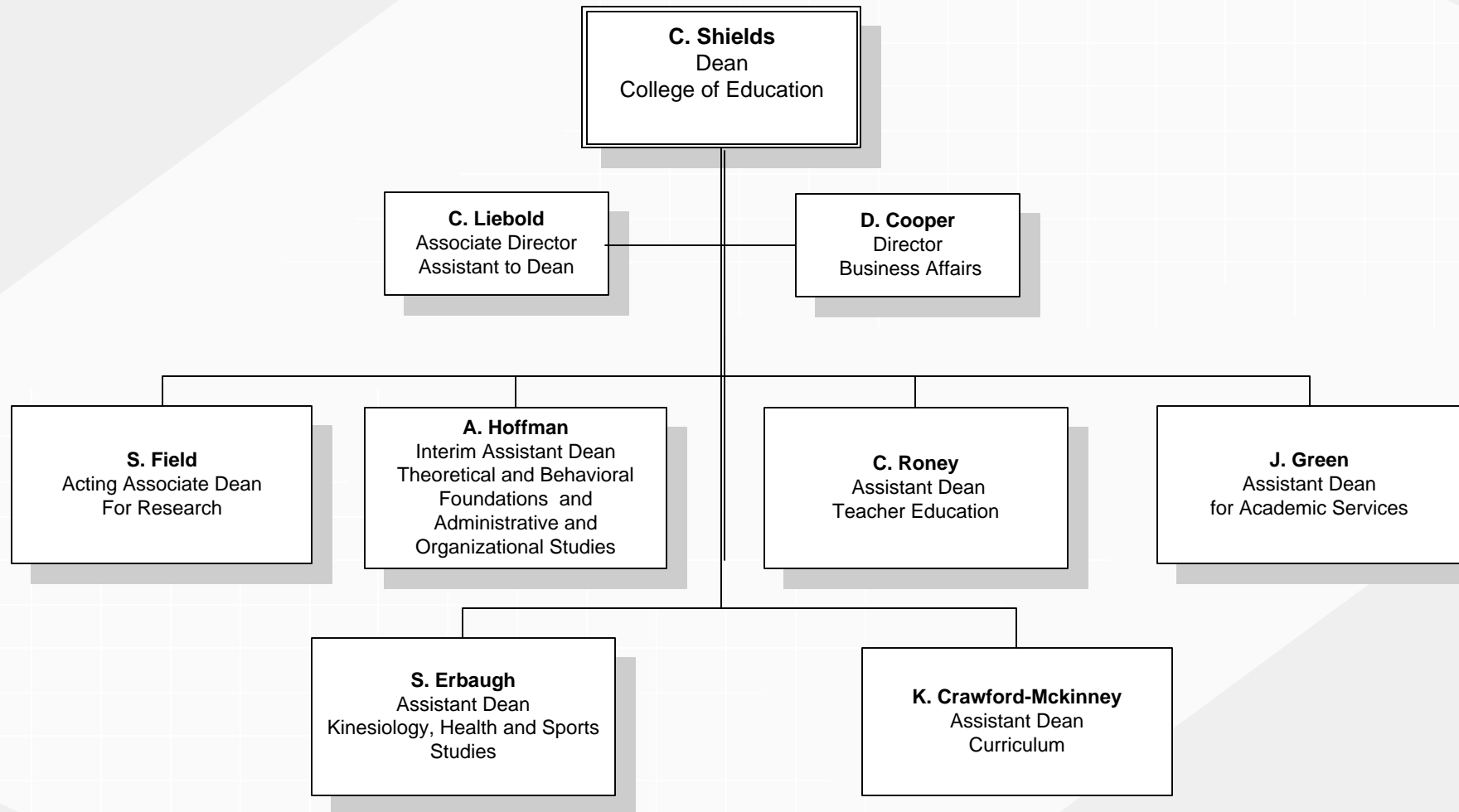
SCHOOL OF BUSINESS ADMINISTRATION

February 2012



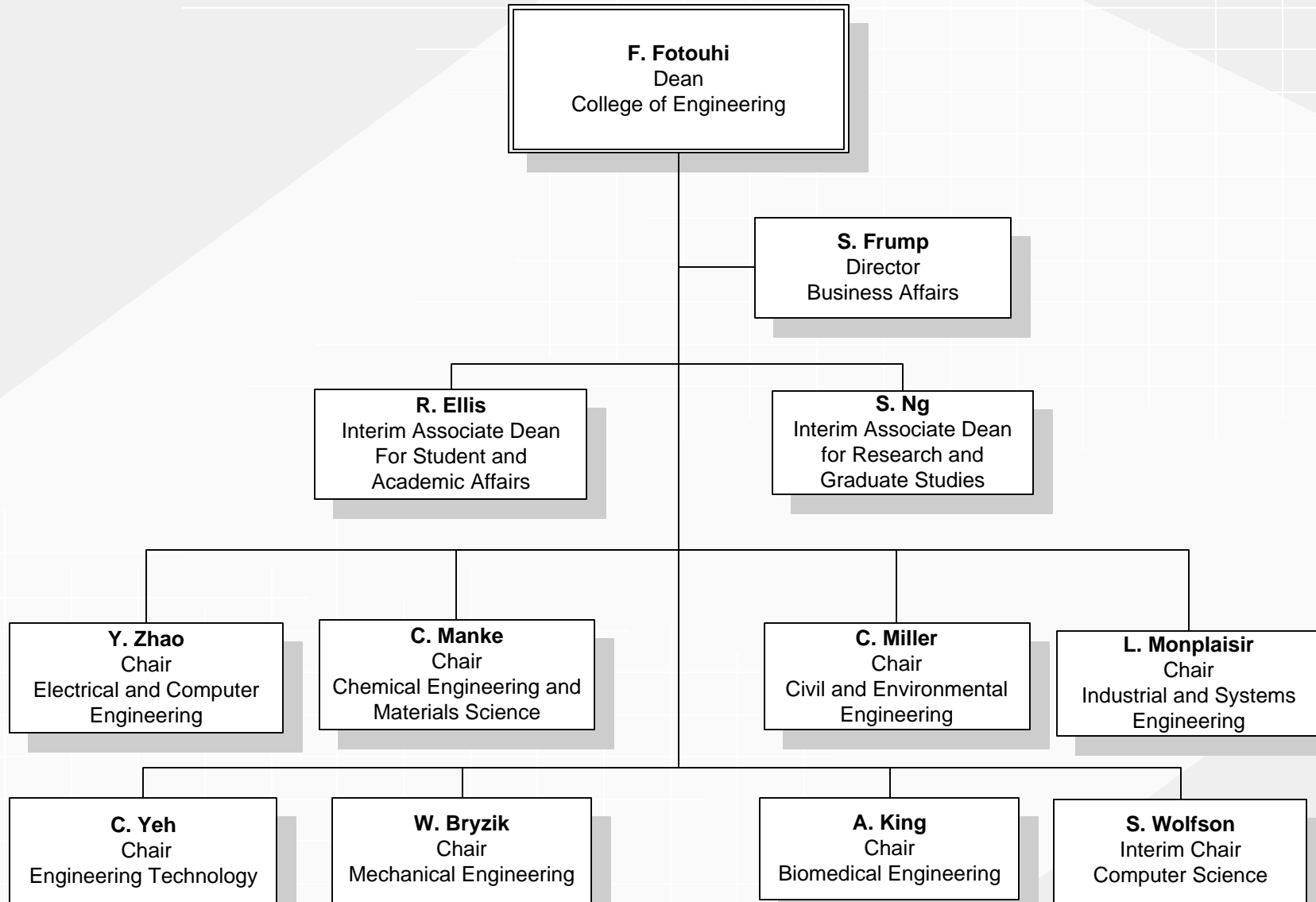
COLLEGE OF EDUCATION

February 2012



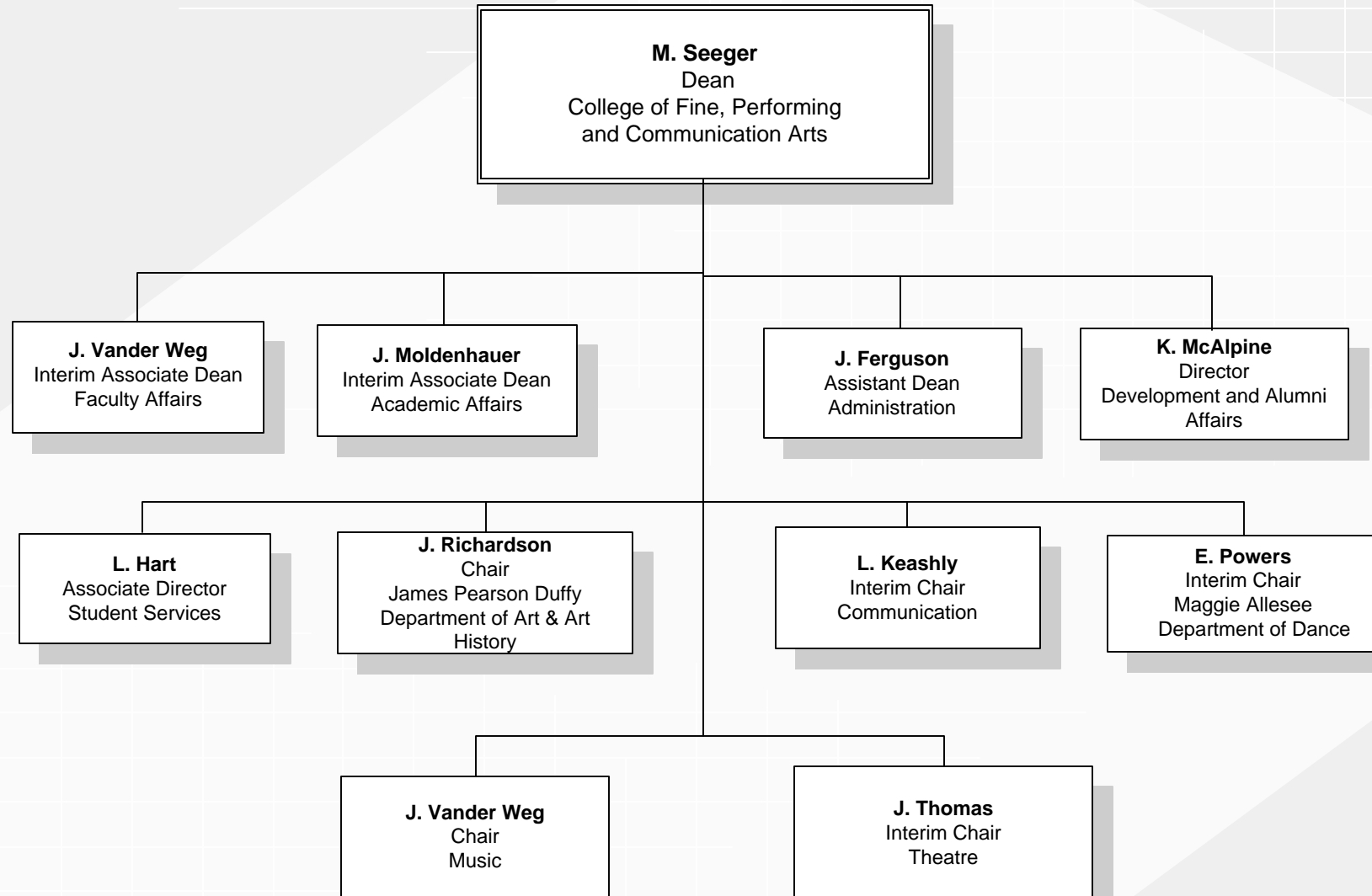
COLLEGE OF ENGINEERING

February 2012



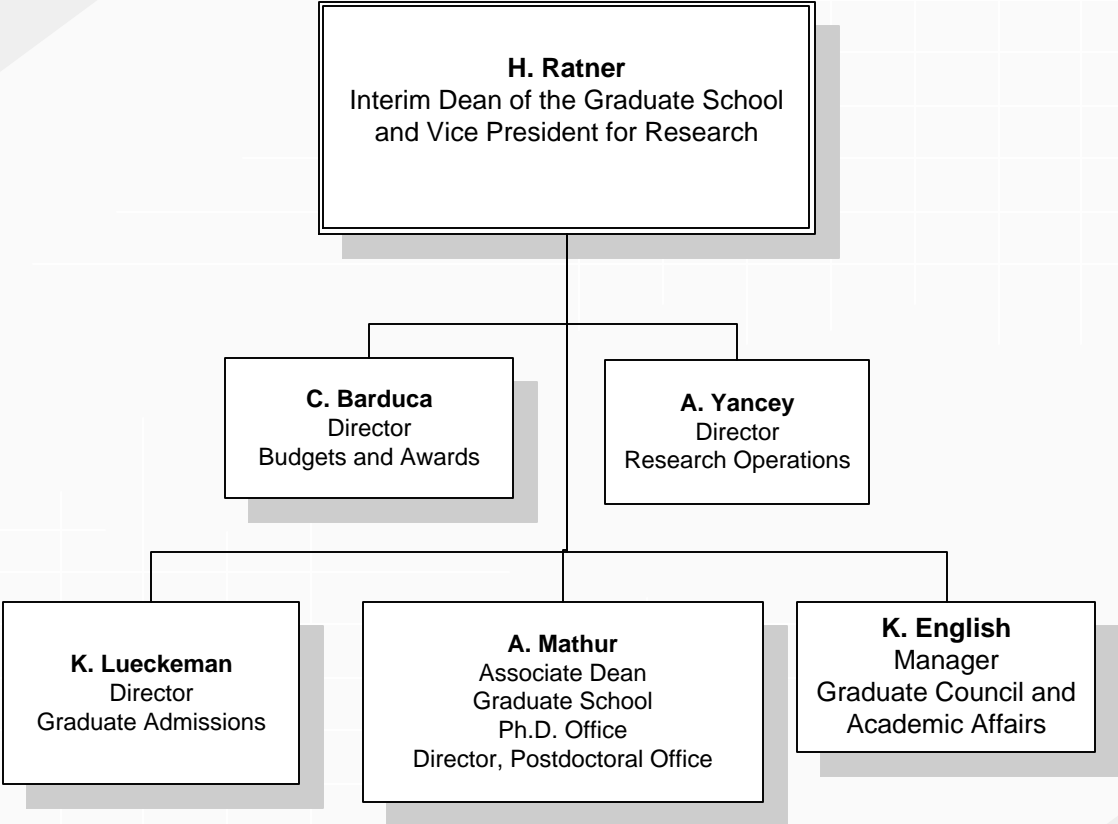
COLLEGE OF FINE, PERFORMING AND COMMUNICATION ARTS

February 2012



GRADUATE SCHOOL

February 2012



IRVIN D. REID HONORS COLLEGE

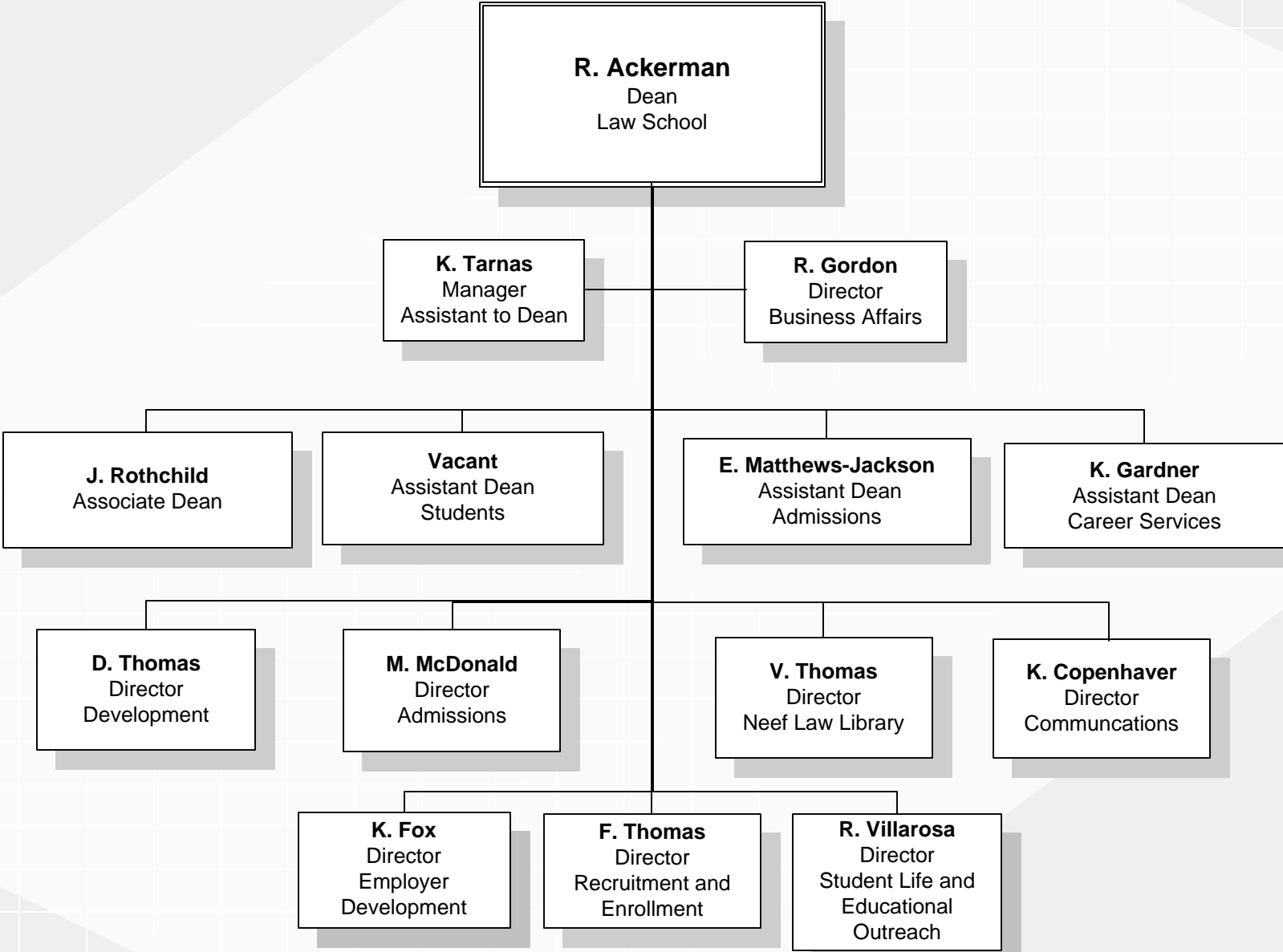
February 2012

J. Herron
Dean

Stuart May
Associate Director
Business Affairs

LAW SCHOOL

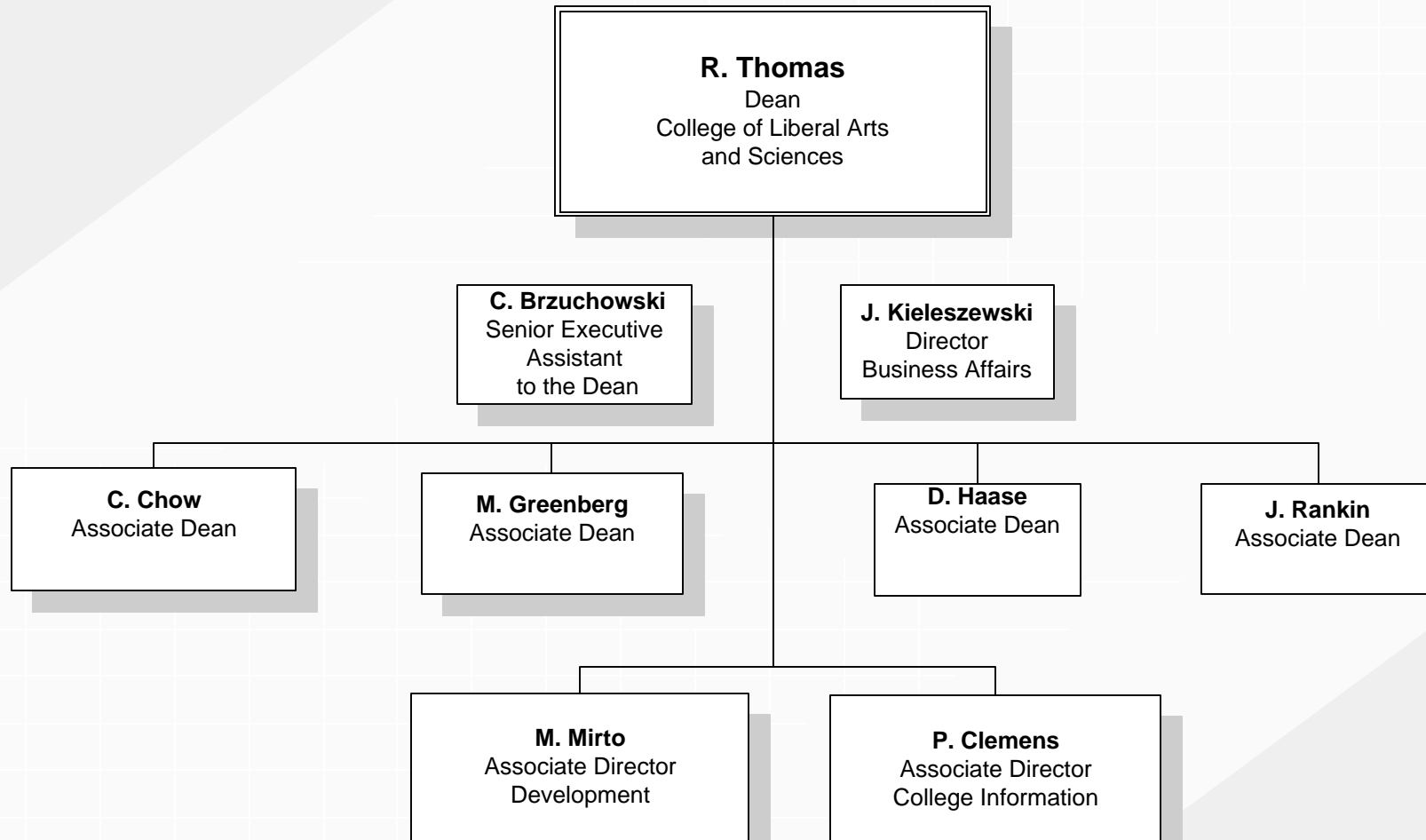
February 2012



COLLEGE OF LIBERAL ARTS AND SCIENCES

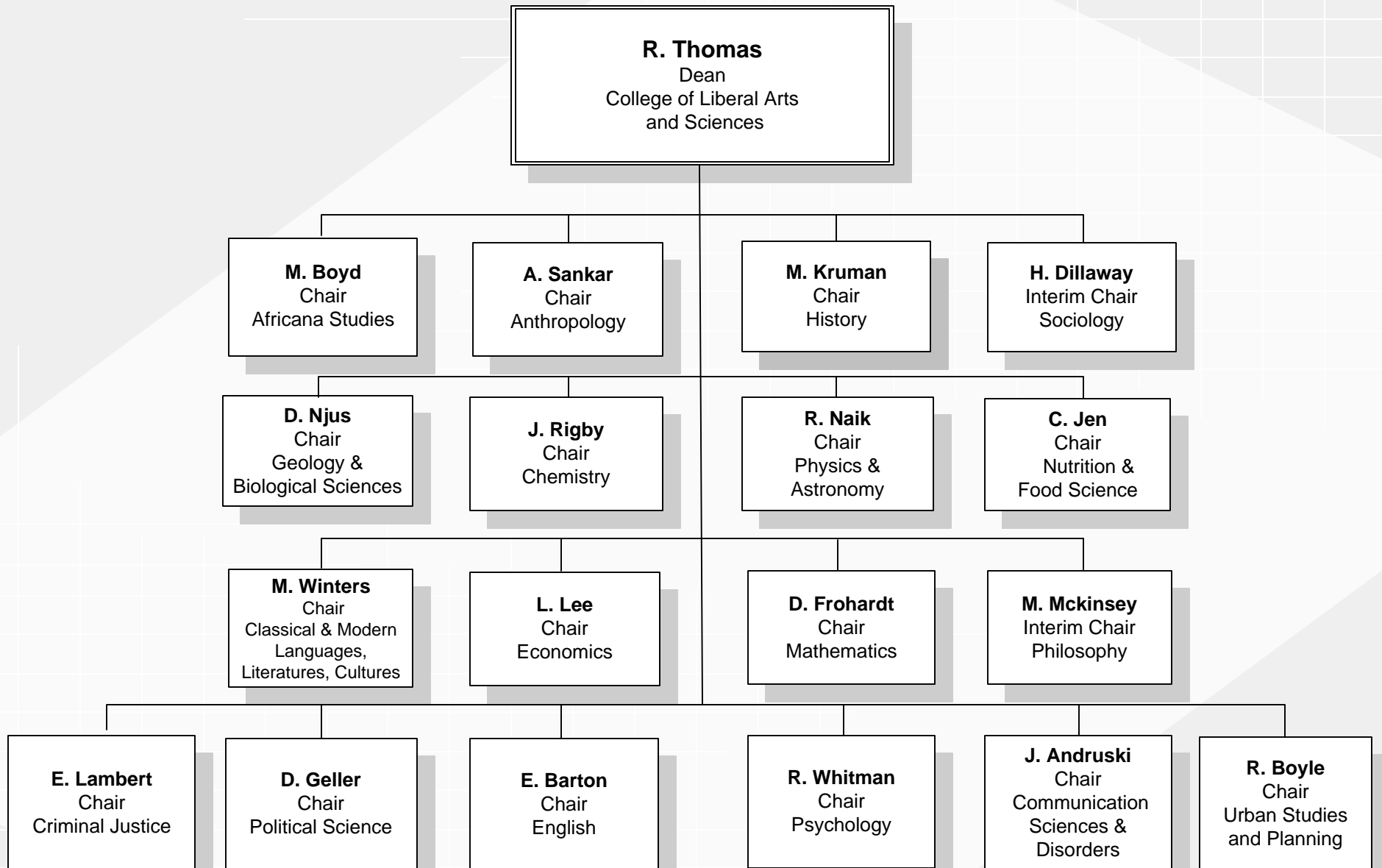
Administrative Structure

February 2012



COLLEGE OF LIBERAL ARTS AND SCIENCES

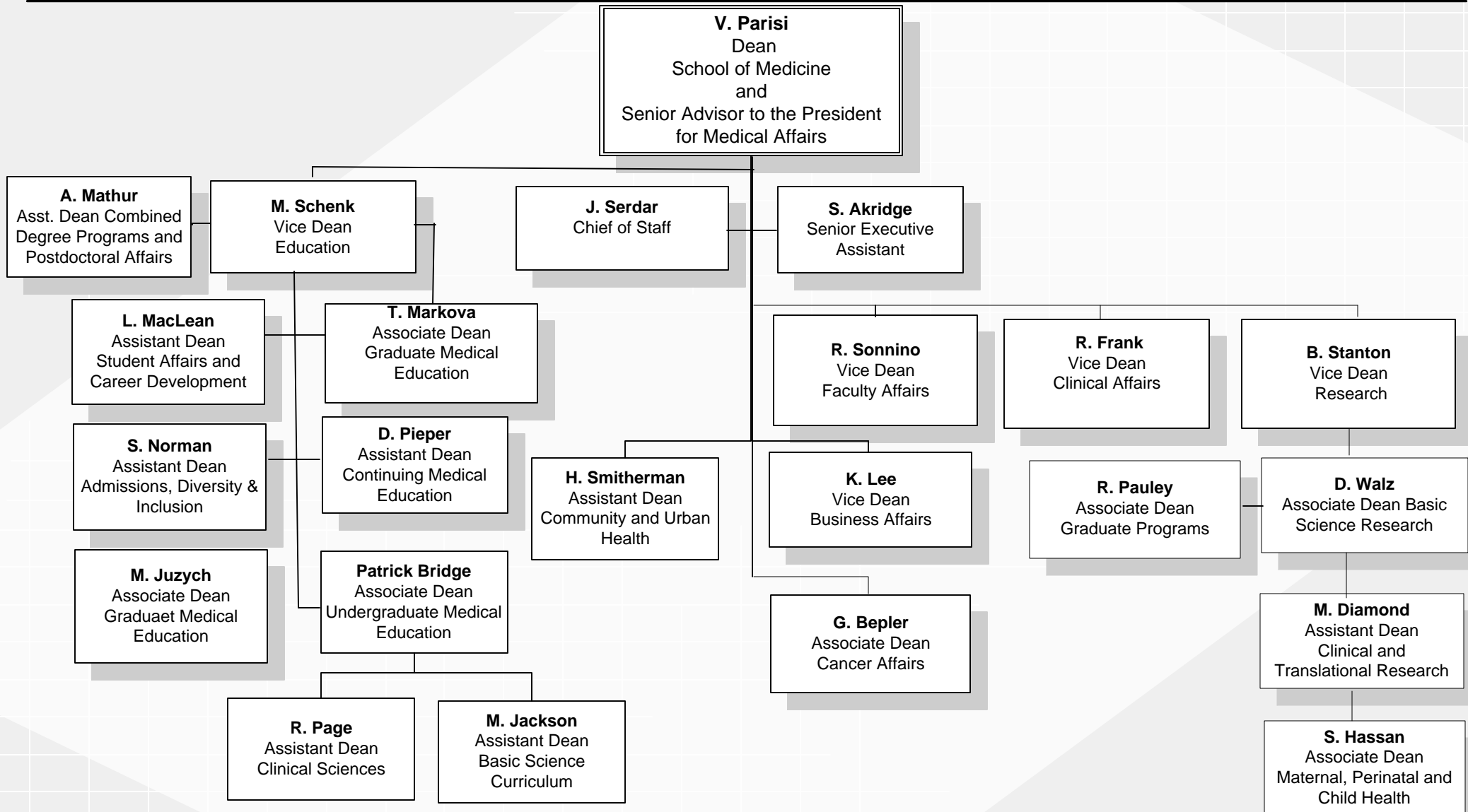
February 2012



SCHOOL OF MEDICINE

Administrative Structure

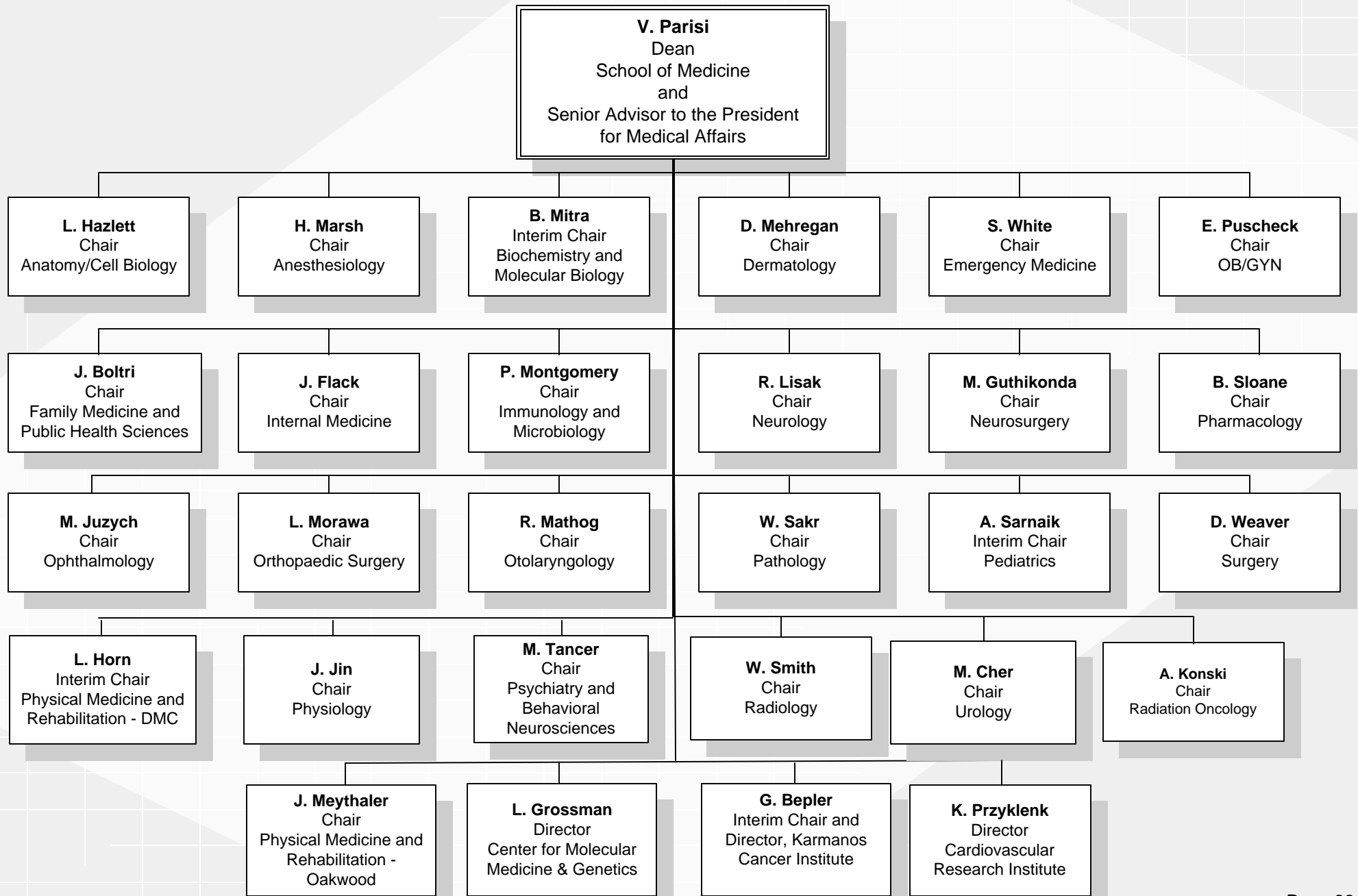
February 2012



SCHOOL OF MEDICINE

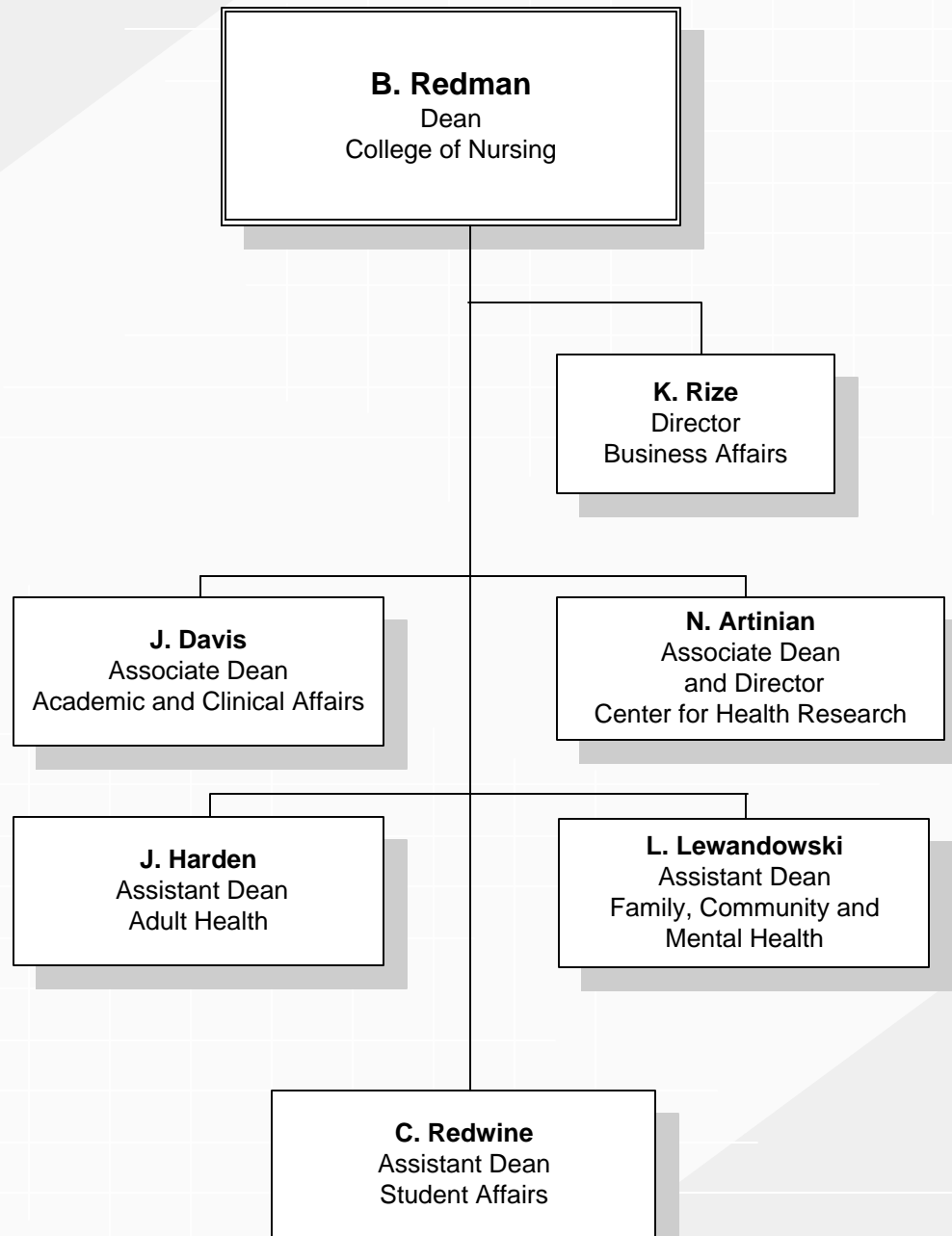
Departments, Centers and Institutes

February 2012



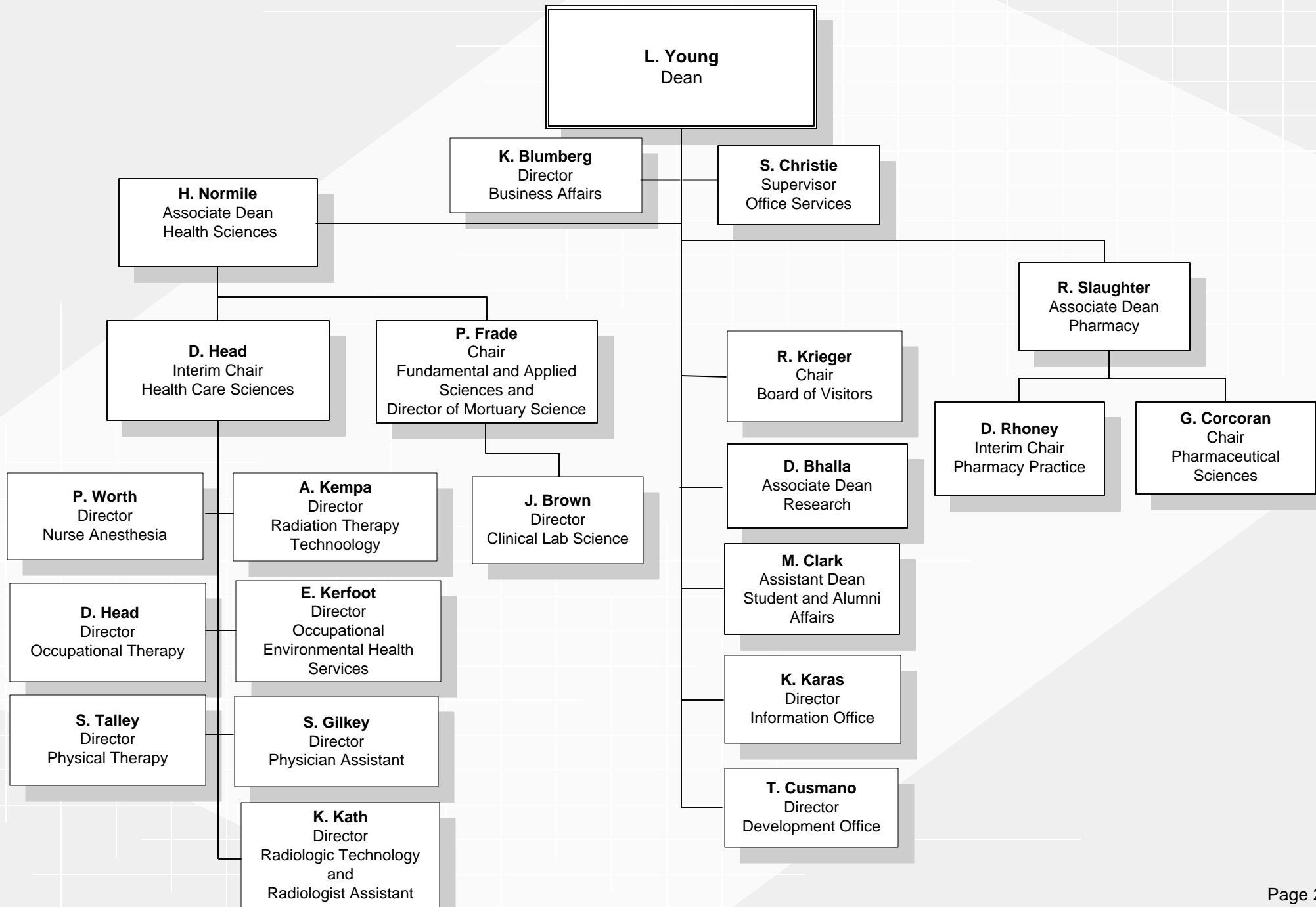
COLLEGE OF NURSING

February 2012



EUGENE APPLEBAUM COLLEGE OF PHARMACY AND HEALTH SCIENCES

February 2012



SCHOOL OF SOCIAL WORK

February 2012

